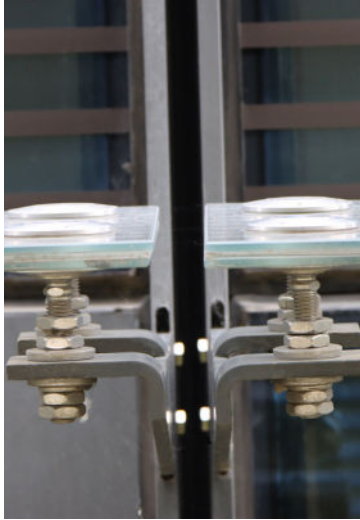


Lyon

LES JARDINS DU LOU



GENERAL CONTRACTOR
F2P

YEAR OF REALISATION
2018/2020

ARCHITECT
AIA Architectes

SURFACE
28.000m²

SADEV CUSTOMER
Seralu

■ THIS PROJECT REQUIRED 8750 SWIVEL FITTINGS R1006 SEISMIC.



Les Jardins du Lou / Lyon Gerland

On Avenue Tony Garnier, opposite to the Matmut Gerland stadium, an area of around 2 hectares has become houses to « Les Jardins du Lou ».

28 000 m² of office space in 6 buildings (R+2 to R+4) and a 340 spaces underground parking (+250 bicycle parking spaces).

Designed with 2 entrances, the parking will be used on match night..

SADEV's motivation

SADEV provided 8750 swivel fittings R1006 seismic for the construction of horizontal glass sunshades under technical approval. There was an additional calculation note prepared for validation purposes.

