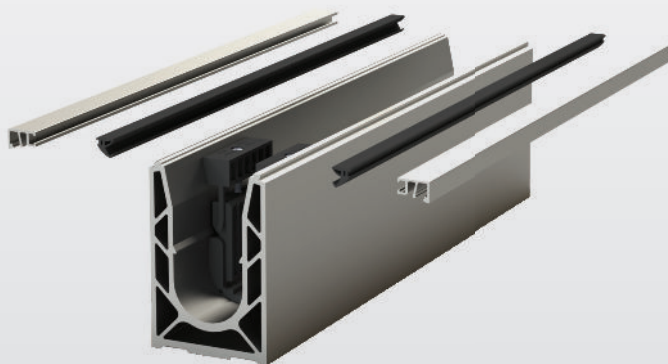


# RECOMMENDATIONS FOR REGULAR MAINTENANCE OF THE **SABCO** SYSTEM



To ensure that your guardrail keeps its safety functions and aesthetic qualities, SADEV recommends that you regularly monitor it and carry out any necessary maintenance operations if necessary, including on the SABCO system elements.

---

**All SABCO products have been tested and validated under the most extreme conditions, their durability is proven. The following recommendations guarantee the longevity and durability of your guardrail.**



## 1 GLASS CONTROL

At regular intervals (at least once a year), SADEV recommends a visual inspection of the glass installed in the SABCO profile. Any anomaly should be reported and depending on the seriousness of the anomaly, the glass panel(s) concerned should be changed.

### The following anomalies are considered as serious

*(non-exhaustive list):*

- > Chipped glass
- > Broken glass
- > Change of transparency of the glass
- > Strong visual defect (tension)
- For laminated glass:**
  - > Broken glass on one side only
- > Partial delamination of the glass at any point
- > Total delamination
- > Tempering defect
- > Glass with assembly defects

In the case of an event considered as a natural disaster, earthquake or severe weather event (abnormal wind) or fire, **a glass inspection must be carried out immediately following the event.**

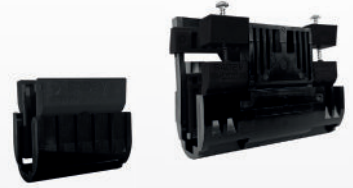
## 2 GASKETS AND COVERS CONTROL

At regular intervals, SADEV recommends to do :

- > Regular cleaning of the seals and covers at least once a year to maintain an effective seal. *(See our «Recommendations for the maintenance of Sadev aluminium products» sheet).*
- > A visual control of the seal installed in the SABCO profile.

**Any anomaly must be reported and depending on the seriousness of the anomaly, the seal must be repositioned if it is not damaged or replaced if it is damaged.**





### 3 CONTROL OF THE TIGHTENING WEDGES

The SABCO wedges are the main element of the effective carrying of the glass and guarantee the safety of the guardrail.

> At regular intervals (at least once a year), SADEV recommends a visual check of the wedges and a check of the screw tightening torques (using the tool ref: 007-TRVS-2NM or 007-TRVS-1.4NM according to the type of glass used and to the wedges assembly instructions.

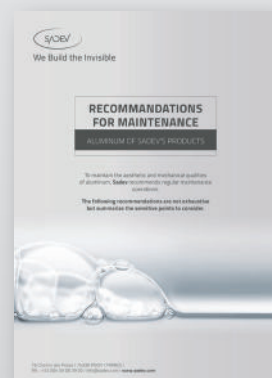
**Any anomaly must be reported and depending on the seriousness of the anomaly it will be necessary to proceed to a tightening of the wedges to the torque or to a replacement of the wedges. The following anomalies are considered as serious and require a replacement or a tightening of the wedges (non exhaustive list):**

- > Clamping screw missing
- > Clamping screw head broken
- > Clamping screw protruding from the top of the wedge
- > Clamping screw oxidized
- > Broken wedge
- > Damaged wedge
- > Wedge partly dismantled
- > Some of the wedge's components are missing.

### 4 MAINTENANCE OF ALUMINUM

You will find all the recommendations for the maintenance of aluminum in our document:

« **Recommendations for maintenance aluminum of Sadev's products** ».



Available on [sadev.com](http://sadev.com)