

Danemark

# LIGHTHOUSE 2.0



**PROJECT OWNERSHIP**  
AARSLEFF

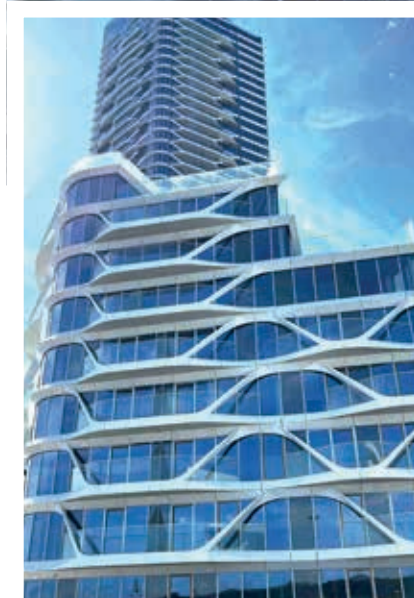
**ARCHITECT**  
3XN

**ENGINEERING OFFICE**  
RAMBOLL GROUP

**REALISATION**  
2022

**SURFACE**  
HEIGHT: 142 METERS  
63.000 M<sup>2</sup>

■ THIS PROJECT REQUIRED 4,000 M OF SABCO  
GUARDRAILS, 800 M OF WHICH WERE CURVED



## Denmark's tallest residential building

This 400-unit housing development has a unique location at the tip of Aarhus Island - where the sea and the city meet.

It consists of a 142-metre-high tower, Fyrtårnet, and two side buildings - Kanalhuset and Promenadehuset.

### SADEV'S ROLE

The company supplied more than 4,000 m of balustrade, around 800 m of which was curved with different radii and the remainder straight, as well as profiles for balcony partitions.

The installed profiles are SABCO balustrades, reference 7031, staggered, with special drilling and specific anodization for the coastal location.

Our ONE SIDE shim system was used for quick and easy one-sided assembly.

PHOTO CREDIT : © Sadev



We Build the Invisible

76 Chemin des Poses | 74330 POISY | FRANCE |  
Tél. : +33 (0)4 50 08 39 00 | info@sadev.com | [www.sadev.com](http://www.sadev.com)