

Paris

SHOPPING CENTER 3 FONTAINES



PROJECT OWNERSHIP
HAMMERSON

REALISATION
2021

ARCHITECT
B.D.P

SURFACE
170 000 M²

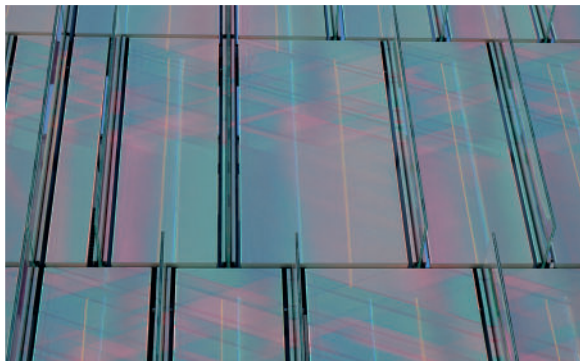
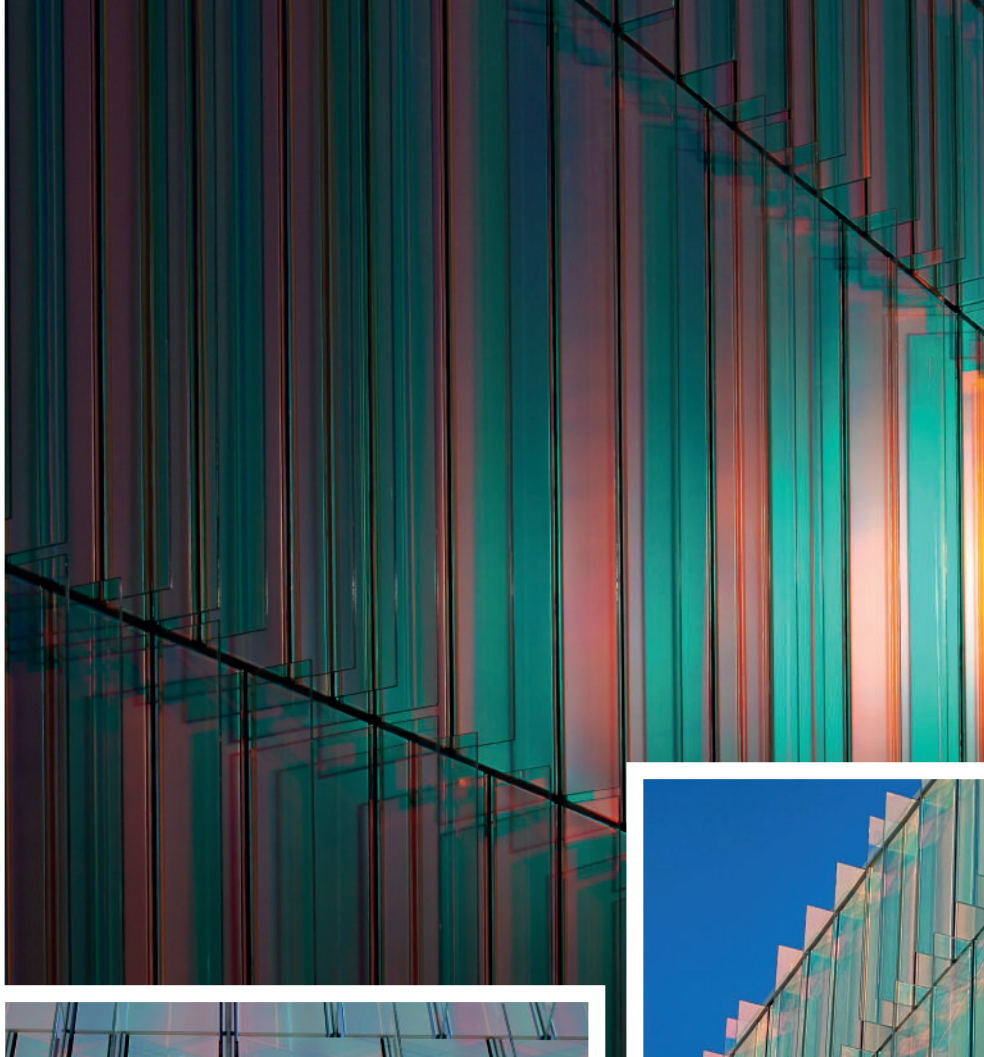
ENGINEERING OFFICE
TERRELL GROUP

CERTIFICATIONS
BREEAM
« EXCELLENT LEVEL »



CUSTOMER SADEV
SEVEME

■ THIS PROJECT REQUIRED 2,600 ML
OF SABCO GUARDRAILS



It is the historic centre of north-western Paris (located on the outskirts of Paris, in Cergy-Pontoise) but also one of the oldest shopping centres in France, built in 1972.

A complete restructuring and extension project was initiated by the Hammerson Group, the current owner, to completely revise the shopping centre which had aged and no longer met the expectations of the clientele, both in terms of atmosphere and offer. This redesign project has taken place over several years and in several phases.

SADEV'S ROLE

We carried out discussions, proposals for solutions and optimisation of the system with the TERREL design office to find the most suitable solution for maintaining the dichroic glass vertical sunshades.

This product allows large glass dimensions to be maintained, and also allows rapid installation on site, with complete pre-assembly in the factory (fixing system + glass) and direct assembly on site.

More than 1,700 glass slats up to 2.8 m long are held in place by our sunshade product.

PHOTO CREDIT : © Sadev



We Build the Invisible

76 Chemin des Poses | 74330 POISY | FRANCE |
Tél. : +33 (0)4 50 08 39 00 | info@sadev.com | www.sadev.com