

OUR RANGE

HANDRAIL & ACCESSORIES



SADEV

HANDRAILS

SAFETY IS THE MAIN FUNCTION OF A HANDRAIL

In addition to their aesthetic aspect, handrails have a guiding and safety function, for people with reduced mobility, the visually impaired, the elderly or children.

In France, public buildings, must be equipped with handrails in staircases, areas with difficult access, areas with high public traffic to comply with the law.

At the international scale, these products are also regulated according to the standards of each country.

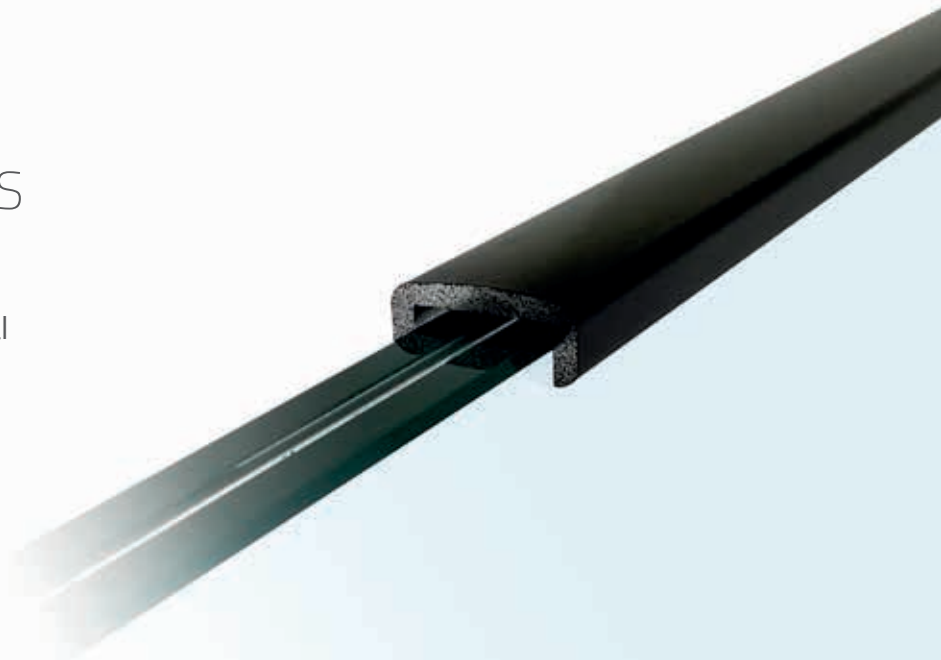
THE PERFECT ALIGNMENT OF THE GLASS

It allows to protect the edges of the glasses but it is also a glass alignment aid during the railing installation.

DESIGN, AESTHETICS AND DURABILITY

Our handrails are available in several materials, in different shapes and finishes.

Each of our ranges includes specific accessories.



Choose:

THE SHAPE:



THE MATERIAL:



THE WOOD,
An ecological material and natural.

- Raw and natural material.
- It can be easily changed to a different shade. (varnish or paint).
- Warm aspect.

INDOOR



ALUMINUM,
a modern look

- Resistant and sustainable material (recycled and 100% recyclable).
- Sober effect.
- Low maintenance (Sadev cleaning kit).

INDOOR & OUTDOOR



STAINLESS STEEL,
a contemporary style

- Solid.
- Resistant to thermal variations.
- Anti-corrosion.
- Low maintenance (Sadev cleaning kit).

STAINLESS STEEL 316 - OUTDOOR: effective in aggressive environments
STAINLESS STEEL 304 - INDOOR

THE FINISH:

Finish / Finish:

00 Aluminium brut sans scotch adhésif
/Raw aluminium without adhesive tape

01 Anodized aluminum/Anodised aluminium
02 Aluminium Brushed stainless steel effect
/Brushed stainless steel effect aluminium

03 RAL

N Noir/Black

31 Inox satiné/Satin Stainless Steel

32 Inox brillant/Polished Stainless Steel



ANODIZED ALUMINUM



BRUSHED STAINLESS STEEL
EFFECT ALUMINIUM



BRUSHED STAINLESS STEEL



RAL



BEECH



OAK

SUMMARY OF HANDRAILS & ACCESSORIES

P07

HANDRAILS
**GLASS EDGE
PROTECTION**





P 11 HANDRAILS
GROOVE



HANDRAILS & ASSOCIATED ACCESSORIES

TO BE FOUND FOR EACH MODEL

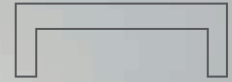
For each handrail,
find its list of adapted accessories.



P 19 HANDRAILS
TUBULAR



HANDRAILS GLASS EDGE PROTECTION

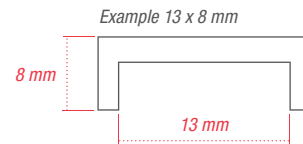


PROFILE
ALUMINIUM

Dimensions: 13x8
Glass thickness: 13.5



PROFILE ALUMINIUM



Finish:  ANODIZED ALUMINIUM

Ref. 0010201308250-01	Dim. 13 x 8 mm	Glass th.. 12.7	L. 2 500 mm	0010201308500-01	Dim. 13 x 8 mm	Glass th.. 12.7	L. 5 000 mm
0010201408250-01	Dim. 14 x 8 mm	Glass th.. 13.5	L. 2 500 mm	0010201408500-01	Dim. 14 x 8 mm	Glass th.. 13.5	L. 5 000 mm
0010201708250-01	Dim. 17 x 8 mm	Glass th.. 16.7	L. 2 500 mm	0010201708500-01	Dim. 17 x 8 mm	Glass th.. 16.7	L. 5 000 mm
0010201908250-01	Dim. 19 x 8 mm	Glass th.. 17.5	L. 2 500 mm	0010201908500-01	Dim. 19 x 8 mm	Glass th.. 17.5	L. 5 000 mm
0010202308250-01	Dim. 23 x 8 mm	Glass th.. 21.5	L. 2 500 mm	0010202308500-01	Dim. 23 x 8 mm	Glass th.. 21.5	L. 5 000 mm
0010202708250-01	Dim. 27 x 8 mm	Glass th.. 25.5	L. 2 500 mm	0010202708500-01	Dim. 27 x 8 mm	Glass th.. 25.5	L. 5 000 mm

Finish:  BRUSHED STAINLESS STEEL EFFECT

Ref. 0010201308250-02	Dim. 13 x 8 mm	Glass th.. 12.7	L. 2 500 mm	0010201308500-02	Dim. 13 x 8 mm	Glass th.. 12.7	L. 5 000 mm
0010201408250-02	Dim. 14 x 8 mm	Glass th.. 13.5	L. 2 500 mm	0010201408500-02	Dim. 14 x 8 mm	Glass th.. 13.5	L. 5 000 mm
0010201708250-02	Dim. 17 x 8 mm	Glass th.. 16.7	L. 2 500 mm	0010201708500-02	Dim. 17 x 8 mm	Glass th.. 16.7	L. 5 000 mm
0010201908250-02	Dim. 19 x 8 mm	Glass th.. 17.5	L. 2 500 mm	0010201908500-02	Dim. 19 x 8 mm	Glass th.. 17.5	L. 5 000 mm
0010202308250-02	Dim. 23 x 8 mm	Glass th.. 21.5	L. 2 500 mm	0010202308500-02	Dim. 23 x 8 mm	Glass th.. 21.5	L. 5 000 mm
0010202708250-02	Dim. 27 x 8 mm	Glass th.. 25.5	L. 2 500 mm	0010202708500-02	Dim. 27 x 8 mm	Glass th.. 25.5	L. 5 000 mm

Finish:  RAL

Ref. 0010201308250-03	Dim. 13 x 8 mm	Glass th.. 12.7	L. 2 500 mm	0010201308500-03	Dim. 13 x 8 mm	Glass th.. 12.7	L. 5 000 mm
0010201408250-03	Dim. 14 x 8 mm	Glass th.. 13.5	L. 2 500 mm	0010201408500-03	Dim. 14 x 8 mm	Glass th.. 13.5	L. 5 000 mm
0010201708250-03	Dim. 17 x 8 mm	Glass th.. 16.7	L. 2 500 mm	0010201708500-03	Dim. 17 x 8 mm	Glass th.. 16.7	L. 5 000 mm
0010201908250-03	Dim. 19 x 8 mm	Glass th.. 17.5	L. 2 500 mm	0010201908500-03	Dim. 19 x 8 mm	Glass th.. 17.5	L. 5 000 mm
0010202308250-03	Dim. 23 x 8 mm	Glass th.. 21.5	L. 2 500 mm	0010202308500-03	Dim. 23 x 8 mm	Glass th.. 21.5	L. 5 000 mm
0010202708250-03	Dim. 27 x 8 mm	Glass th.. 25.5	L. 2 500 mm	0010202708500-03	Dim. 27 x 8 mm	Glass th.. 25.5	L. 5 000 mm

HANDRAIL GLASS EDGE PROTECTION



PROFILE **STAINLESS STEEL 316**

Dimensions: **14 x 10 mm**

Glass thickness: **13.5**

Ref. 0010201410300A4 L. 3 000 mm

Dimensions: **22 x 10 mm**

Glass thickness: **19 / 21.5**

Ref. 0010202210300A4 L. 3 000 mm

Dimensions: **18 x 10 mm**

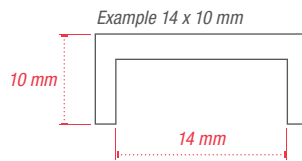
Glass thickness: **17.5**

Ref. 0010201810300A4 L. 3 000 mm

Dimensions: **26 x 10 mm**

Glass thickness: **25.5**

Ref. 0010202610300A4 L. 3 000 mm



CONNECTOR **STAINLESS STEEL 316**

Dimensions: **50 x 60 mm**

Glass thickness: **11.9 > 13.9**

Ref. 009REL5060-12-9/16

Dimensions: **50 x 60 mm**

Glass thickness: **20.2 > 21.6**

Ref. 009REL5060-21.5

Dimensions: **50 x 60 mm**

Glass thickness: **16.2 > 17.6**

Ref. 009REL5060-17.5

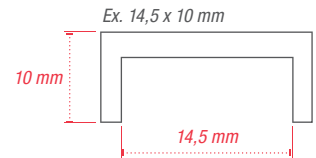




PROFILE **WOOD**

Material:  OAK

Ref. 0010202410240W10	Dim. 14.5 x 10 mm	Glass th.. 6.6	L. 2 400 mm
0010202810240W10	Dim. 18.5 x 10 mm	Glass th.. 8.8	L. 2 400 mm
0010203210240W10	Dim. 22.5 x 10 mm	Glass th.. 10.10	L. 2 400 mm



Material:  BEECH

Ref. 0010202410240W20	Dim. 14.5 x 10 mm	Glass th.. 6.6	L. 2 400 mm
0010202810240W20	Dim. 18.5 x 10 mm	Glass th.. 8.8	L. 2 400 mm
0010203210240W20	Dim. 22.5 x 10 mm	Glass th.. 10.10	L. 2 400 mm

ACCESSORIES



ANGLE **WOOD**

Material:  OAK

Dimensions: **100 x 100 mm**

Ref. 001020231029W10	Glass th.. 6.6
001020281029W10	Glass th.. 8.8
001020321029W10	Glass th.. 10.10

Material:  BEECH

Dimensions: **100 x 100 mm**

Ref. 001020231029W20	Glass th.. 6.6
001020281029W20	Glass th.. 8.8
001020321029W20	Glass th.. 10.10

FIXING MATERIAL

ADHESIVE ROLLER
DOUBLE SIDED
12 mm x 18 m
Ref. 0010ADDF-BOI-12-18

HANDRAIL GROOVE



TUBE **WOOD**

Diameter: 42
Glass thickness: 8.8



TUBE ALUMINIUM

Diameter: **50 mm**

Ref. 00102050500AL01 L. 5 000 mm  ANODIZED ALUMINUM

00102050500AL02 L. 5 000 mm  BRUSHED STAINLESS STEEL EFFECT

ACCESSORIES



GASKET

Glass thickness: **8.8/4**

Ref. 001024AL175 L. 5 000 mm

Glass thickness: **10.10/4**

Ref. 001024AL215 L. 5 000 mm

CAP ALUMINIUM

Diameter: **50 mm**

Ref. 00102050B0AL01  ANODIZED ALUMINUM

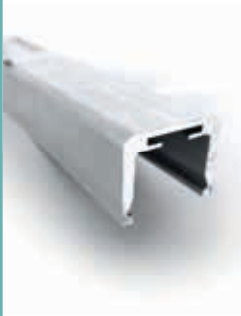
Ref. 00102050B0AL02  BRUSHED STAINLESS STEEL EFFECT

90° CONNECTOR

Dimensions: **100 x 100 mm**

Ref. 00102029

HANDRAIL GROOVE



TUBE ALUMINIUM

Dimensions: **48 x 37 mm**

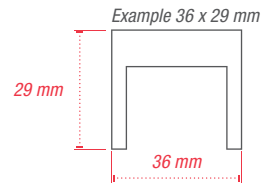
Ref. 0010204837500AL01  ANODIZED ALUMINUM L. 5 000 mm

0010204837500AL02  BRUSHED STAINLESS STEEL EFFECT L. 5 000 mm

Dimensions: **36 x 29 mm**

Ref. 0010203629500AL01  ANODIZED ALUMINUM L. 5 000 mm

0010203629500AL02  BRUSHED STAINLESS STEEL EFFECT L. 5 000 mm



ACCESSORIES



GASKET

Glass thickness: **8.8/4**


Ref. 001024AL175 L. 5 000 mm

Glass thickness: **10.10/4**

Ref. 001024AL215 L. 5 000 mm



CAP ALUMINIUM

Finish:  ANODIZED ALUMINUM

Ref. 0010203629B0AL01 Dim. **36 x 29 mm**

0010204837B0AL01 Dim. **48 x 37 mm**

Finish:  BRUSHED STAINLESS STEEL EFFECT

Ref. 0010203629B0AL02 Dim. **36 x 29 mm**

0010204837B0AL02 Dim. **48 x 37 mm**



90° CONNECTOR

Dimensions: **100 x 100 mm**

Ref. 00102029



TUBE

STAINLESS STEEL 304

Ref. 00102042500	∅ 42 mm	L. 5 000 mm
00102048500	∅ 48 mm	L. 5 000 mm
00102060500	∅ 60 mm	L. 5 000 mm

STAINLESS STEEL 316

Ref. 00102042500A4	∅ 42 mm	L. 5 000 mm
00102048500A4	∅ 48 mm	L. 5 000 mm
00102060500A4	∅ 60 mm	L. 5 000 mm

ACCESSORIES



GASKET

Glass thickness: 10 > 13.5

Ref. 00102410135	∅ 42.4 mm
00102910135	∅ 48.3 mm

Glass thickness: 15 > 17.5

Ref. 001024175	∅ 42.4 mm
00102915175	∅ 48.3 mm
00103415175	∅ 60.3 mm

Glass thickness: 21 > 25.5

Ref. 00102921255	∅ 48.3 mm
00103421255	∅ 60.3 mm

Glass thickness: 19 > 21.5

Ref. 00102419215	∅ 42.4 mm
00102919215	∅ 48.3 mm
00103419215	∅ 60.3 mm



CAP

STAINLESS STEEL 304

Ref. 0010204210	∅ 42 mm
0010204810	∅ 48 mm
0010206010	∅ 60 mm

STAINLESS STEEL 316

Ref. 0010204210A4	∅ 42 mm
0010204810A4	∅ 48 mm
0010206010A4	∅ 60 mm

ACCESSORIES



90° CONNECTOR

STAINLESS STEEL 304

Ref. 0010204229	∅ 42 mm
0010204829	∅ 48 mm
0010206029	∅ 60 mm

STAINLESS STEEL 316

Ref. 0010204229A4	∅ 42 mm
0010204829A4	∅ 48 mm
0010206029A4	∅ 60 mm



180° CONNECTOR

STAINLESS STEEL 304

Ref. 0010204220	∅ 42 mm
0010204820	∅ 48 mm
0010206020	∅ 60 mm

STAINLESS STEEL 316

Ref. 0010204220A4	∅ 42 mm
0010204820A4	∅ 48 mm
0010206020A4	∅ 60 mm



WALL CONNECTOR **STAINLESS STEEL 304**

Ref. 0010204211	∅ 42 mm
0010204811	∅ 48 mm



ARTICULATED JOINT **STAINLESS STEEL 304**

Ref. 00102042291	∅ 42 mm	Angle 25 - 55°
00102042292		

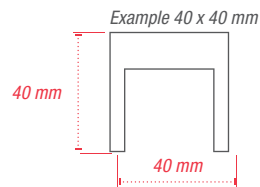




TUBE **STAINLESS STEEL 316**

Dimensions: **40 x 40 mm**

Ref. 0010204040600A4 L. 6 000 mm



ACCESSORIES



GASKET

Glass thickness: **6.6**

Ref. 001024135 L. 5 000 mm

Glass thickness: **8.8**

Ref. 001024175 L. 5 000 mm

Glass thickness: **10.10**

Ref. 001024215 L. 5 000 mm



90° CONNECTOR **STAINLESS STEEL 316**

Dimensions: **40 x 40 mm**

Ref. 001020404029A4



180° CONNECTOR **STAINLESS STEEL 316**

Dimensions: **40 x 40 mm**

Ref. 001020404020A4

ACCESSORIES



CAP **STAINLESS STEEL 316**

Dimensions: **40 x 40 mm**

Ref. 001020404010A4



ARTICULATED JOINT **STAINLESS STEEL 316**

Dimensions: **40 x 40 mm**

Ref. 0010304040291A4	Descente
0010304040292A4	Monté



WALL CONNECTOR **STAINLESS STEEL 316**

Dimensions: **40 x 40 mm**

Ref. 001030404011A4



TUBE **WOOD**

Diameter: **42 mm** | Glass thickness: **8.8**

Ref. 00102042180W10B

L. 1 800 mm

 OAK

00102042180W20B

 BEECH



TUBE **WOOD**

Dimensions: **40 x 40 mm** | Glass thickness: **8.8**

Ref. 0010204040180W10B

L. 1 800 mm

 OAK

0010204040180W20B

 BEECH

Wooden handrails 60x40 mm are on request.

FIXING MATERIAL

ADHESIVE ROLLER

DOUBLE SIDED

12 mm x 18 m

Ref. 0010ADDF-B0I-12-18



DIRECT LIGHTING TO INCREASE SAFETY

By choosing our **LED products and accessories**, you can opt for a lighted handrail in a staircase or a corridor for an optimal safety* or to create a decorative effect.

** Dans des lieux publics ou ERP, des normes imposent un niveau minimum de 150 lux au sol.*

HANDRAIL GROOVE - LED OPTION



TUBE

STAINLESS STEEL 304

Ref. 00102042500 \varnothing 42 mm L. 5 000 mm

STAINLESS STEEL 316

Ref. 00102042500A4 \varnothing 42 mm L. 5 000 mm



WALL BRACKET - FIXED - LED **STAINLESS STEEL 304**

Ref. 00106000

ACCESSORIES



LED PROFILE - PVC

Ref. 0010LED1-PROFSUP L. 2 000 mm



LED DIFFUSER COVER - PVC

Ref. 0010LED1-CAPODIFF



LED STRIP

Ref. 0010LED1-BLCNTR5M L. 5 000 mm



CLIP CONNECTOR

Ref. 0010LED1-CON1CLIP

These 2 elements can be connected by welding.



CLIP CONNECTOR

Ref. 0010LED1-CON2

To linearly join two LED strips.



CONNECTOR TO BE WELDED

Ref. 0010LED1-CONSOUD



CAP

Ref. 0010LED1-B0

FIXING MATERIAL

ADHESIVE ROLLER DOUBLE SIDED - 15 mm x 1.5 m

Ref. 0010ADDF-VER-12-25

HANDRAIL TUBULAR



TUBE

STAINLESS STEEL 304

Diameter: 48.3





TUBE

STAINLESS STEEL 304

Ref. 00103033200	∅ 33.7 mm	L. 2 000 mm
00103033400	∅ 33.7 mm	L. 4 000 mm
00103033600	∅ 33.7 mm	L. 6 000 mm
Ref. 00103042200	∅ 42.4 mm	L. 2 000 mm
00103042400	∅ 42.4 mm	L. 4 000 mm
00103042600	∅ 42.4 mm	L. 6 000 mm
Ref. 00103048200	∅ 48.3 mm	L. 2 000 mm
00103048400	∅ 48.3 mm	L. 4 000 mm
00103048600	∅ 48.3 mm	L. 6 000 mm

STAINLESS STEEL 316

Ref. 00103033200A4	∅ 33.7 mm	L. 2 000 mm
00103033400A4	∅ 33.7 mm	L. 4 000 mm
00103033600A4	∅ 33.7 mm	L. 6 000 mm
Ref. 00103042200A4	∅ 42.4 mm	L. 2 000 mm
00103042400A4	∅ 42.4 mm	L. 4 000 mm
00103042600A4	∅ 42.4 mm	L. 6 000 mm
Ref. 00103048200A4	∅ 48.3 mm	L. 2 000 mm
00103048400A4	∅ 48.3 mm	L. 4 000 mm
00103048600A4	∅ 48.3 mm	L. 6 000 mm

ACCESSORIES



CAP

STAINLESS STEEL 304

Ref. 0010303310	∅ 33.7 mm
0010304210	∅ 42.4 mm
0010304810	∅ 48.3 mm

STAINLESS STEEL 316

Ref. 0010303310A4	∅ 33.7 mm
0010304210A4	∅ 42.4 mm
0010304810A4	∅ 48.3 mm



90° CONNECTOR

STAINLESS STEEL 304

Ref. 0010303329	∅ 33.7 mm
0010304229	∅ 42.4 mm
0010304829	∅ 48.3 mm

STAINLESS STEEL 316

Ref. 0010303329A4	∅ 33.7 mm
0010304229A4	∅ 42.4 mm
0010304829A4	∅ 48.3 mm



180° CONNECTOR

STAINLESS STEEL 304

Ref. 0010303320	∅ 33.7 mm
0010304220	∅ 42.4 mm
0010304820	∅ 48.3 mm

STAINLESS STEEL 316

Ref. 0010303320A4	∅ 33.7 mm
0010304220A4	∅ 42.4 mm
0010304820A4	∅ 48.3 mm



WALL CONNECTOR

STAINLESS STEEL 316

Ref. 0010304211	∅ 42 mm
-----------------	---------

HANDRAIL TUBULAR



TUBE **STAINLESS STEEL 304**

Dimensions: **40 x 40 mm**

Ref. 0010304040300 L. 3 000 mm

ACCESSORIES



CAP **STAINLESS STEEL 304**

Dimensions: **40 x 40 mm**

Ref. 001030404010



WALL CONNECTOR **STAINLESS STEEL 304**

Dimensions: **40 x 40 mm**

Ref. 001030404011A4



90° CONNECTOR **STAINLESS STEEL 304**

Dimensions: **40 x 40 mm**

Ref. 001030404029



180° CONNECTOR **STAINLESS STEEL 304**

Dimensions: **40 x 40 mm**

Ref. 001030404020



TUBE **WOOD**

Diameter: **42 mm**

Ref. 00103042180W10

L. 1 800 mm



OAK

00103042180W20



BEECH

ACCESSORIES



BOUCHON **STAINLESS STEEL 304**

Diameter: **42 mm**

Ref. 0010304210W



CONNECTOR **STAINLESS STEEL 304**

Diameter: **42 mm**

Ref. 00100304220W



90° FEMALE CONNECTOR **STAINLESS STEEL 304**

Diameter: **42 mm**

Ref. 0010304229W



PLASTIC SUPPORT

Diameter: **42 mm**

Ref. 0010304200W



BRACKET
HANDRAIL/GLASS

STAINLESS STEEL 304

Glass thickness: 12 > 17.5

HANDRAIL TUBULAR



HAND RAIL BRACKET ON GLASS STAINLESS STEEL 304

Drilling: **Countersunk**

Glass thickness: **11.5 > 13.5**

Ref. 00101006111004

Glass thickness: **14 > 15.5**

Ref. 00101006111006

Glass thickness: **16 > 17.5**

Ref. 0010100611110

Drilling: **Cylindrical**

Glass thickness: **10 > 12**

Ref. 001010062412

Glass thickness: **13 > 15.5**

Ref. 001010062414

Glass thickness: **16 > 17.5**

Ref. 001010062420

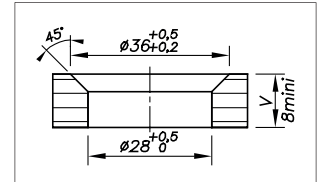
Glass thickness: **18 > 19.5**

Ref. 0010100611112

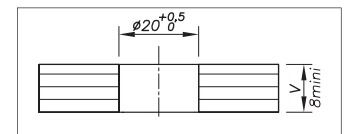
Glass thickness: **20**

Ref. 0010100611114

Drilling Plan Countersunk



Drilling Plan Cylindrical



HAND RAIL BRACKET ON GLASS STAINLESS STEEL 304

Drilling: **Countersunk**

Glass thickness: **10 > 10.5**

Ref. 001020061116

Glass thickness: **16 > 19.5**

Ref. 001020061120

Glass thickness: **20 > 21.5**

Ref. 001020061124

Drilling: **Cylindrical**

Glass thickness: **10 > 10.5**

Ref. 001020062424

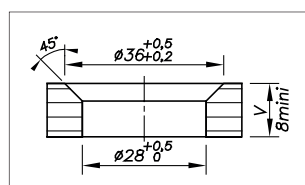
Glass thickness: **16 > 19.5**

Ref. 001020062432

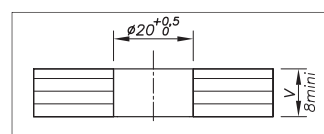
Glass thickness: **20 > 21.5**

Ref. 001020062436

Drilling Plan Countersunk



Drilling Plan Cylindrical





ADJUSTABLE HANDRAIL BRACKET

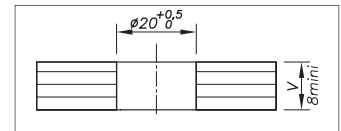
STAINLESS STEEL 304

For cylindrical handrail

Glass thickness: **8 > 18**

Ref. 00104000-0818

Drilling Plan Cylindrical



ADJUSTABLE HANDRAIL BRACKET

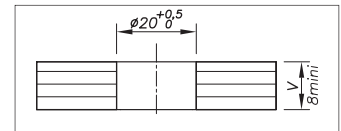
STAINLESS STEEL 304

For flat handrail

Glass thickness: **8 > 18**

Ref. 00104500-0818

Drilling Plan Cylindrical



CLAMPED HANDRAIL SUPPORT

STAINLESS STEEL 304

For cylindrical handrail

Glass thickness: **12 > 17.5**

Ref. 00101030-1218

Glass thickness: **18 > 25.5**

Ref. 00101030-1926



FIXED HANDRAIL BRACKET

WALL **STAINLESS STEEL 304**

For flat handrail

Ref. 00105000



FIXED HANDRAIL BRACKET

For cylindrical handrail

STAINLESS STEEL 304

STAINLESS STEEL 316

Ref. 00101000

Ref. 00101000A4



ADJUSTABLE HANDRAIL BRACKET

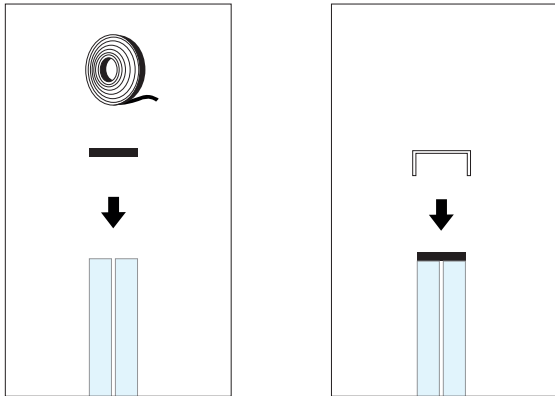
WALL **STAINLESS STEEL 304**

For cylindrical handrail

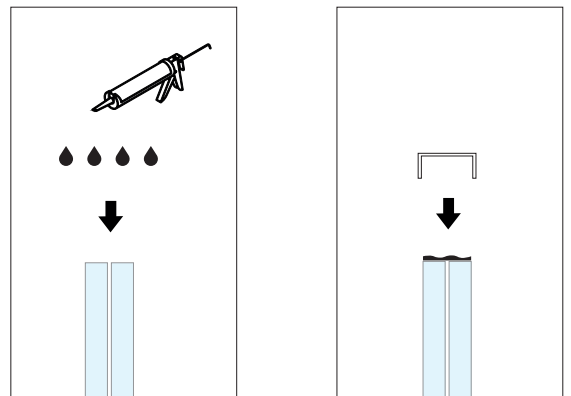
Ref. 00101500

GLASS EDGE PROTECTION

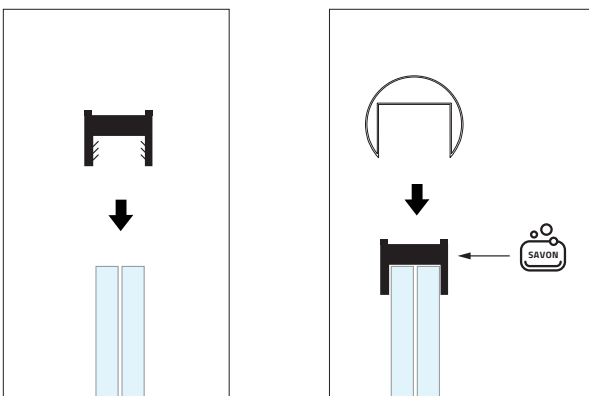
Installation with adhesive



Installation with silicone

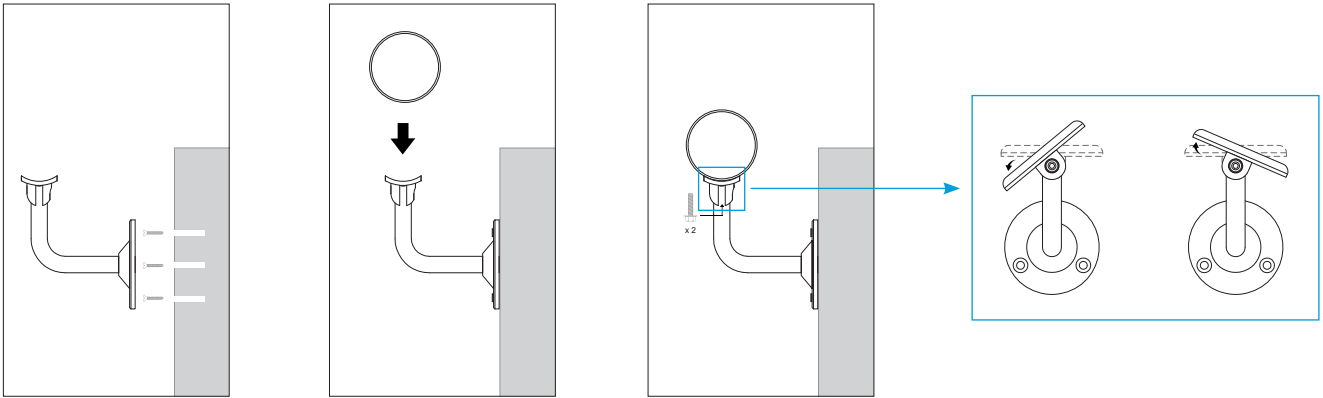


GROOVE



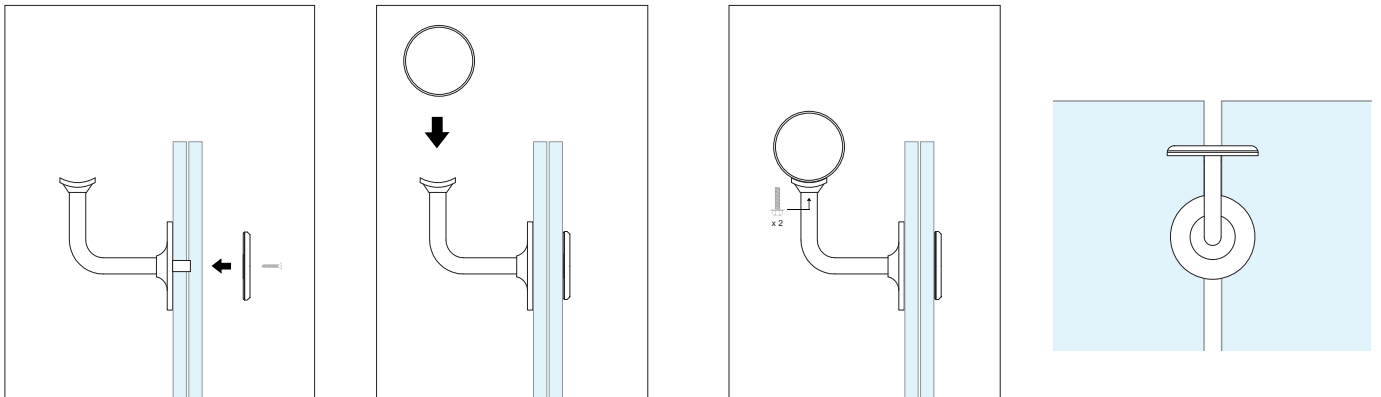
TUBULAR

Fixed handrail bracket - wall

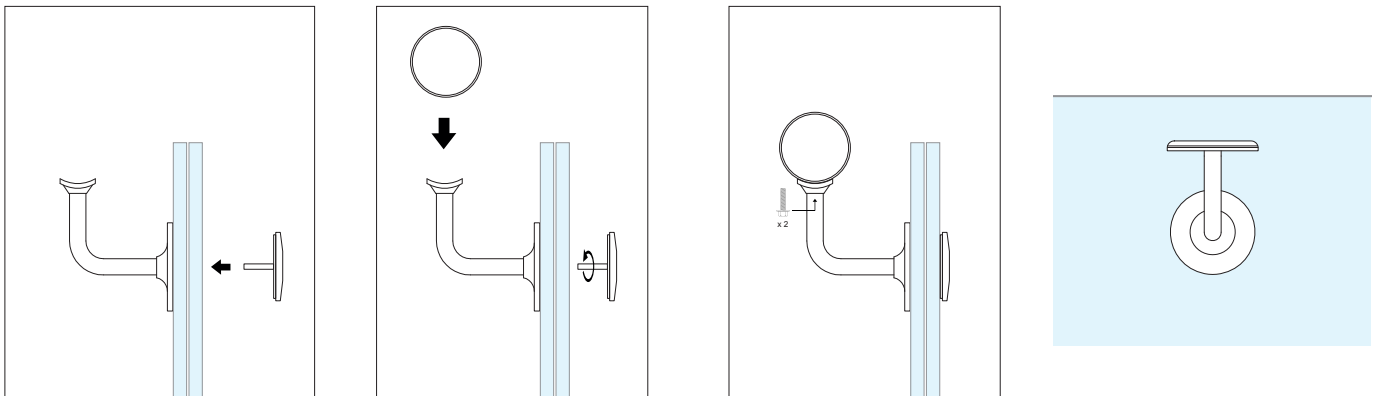


Clamped handrail support

**Tightening torque:
10N.m**



Handrail bracket on drilled glass





CLASSIC

DECOR

CONSTRUCT

SABCO

SWIMSIDE



MEMBRE DE  SIMONSWERK

Tel. +33(0) 4 50 08 39 00 | Fax. +33(0) 4 50 08 39 49
76, chemin des poses - 74330 Poisy (France)

sadev.com

suivez-nous sur

