

OUR RANGE

HANDRAIL & ACCESSORIES



HANDRAILS

SAFETY IS THE MAIN FUNCTION OF A HANDRAIL

US building codes require that handrails be installed on ramps and stairs in all commercial and residential applications for the safety of the general public and loved ones. Top caps may be used in commercial applications to provide an additional guard or stability to a glass balustrade and in the case of residential it can double as a handrail.

In addition to the safety aspect, SADEV provides options to compliment architectural design elements, finishes, and installation requirements.

THE PERFECT ALIGNMENT OF GLASS

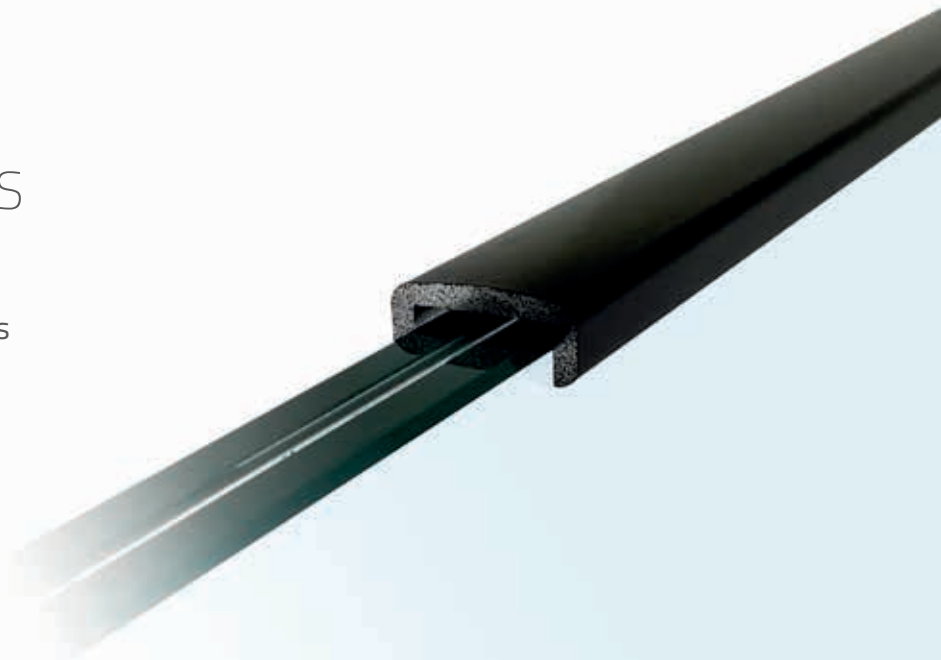
Handrails help protect the edges of the glass as well as aiding in alignment during installation of the railing.

In most residential applications they may also double as a handrail offering a clean minimal design.

DESIGN, AESTHETICS AND DURABILITY

Our handrails are available in various materials, shapes and finishes.

Each of our ranges includes specific accessories.



Choose:

THE SHAPE:



THE MATERIAL:



WOOD,
An ecological and natural material.

- Raw and natural material.
- It can be easily changed to a different shade. (varnish or paint).
- Warm aspect.

INDOOR



ALUMINUM,
a modern look

- Resistant and sustainable material (recycled and 100% recyclable).
- Simple but effective.
- Low maintenance (Sadev cleaning kit).

INDOOR & OUTDOOR



STAINLESS STEEL,
a contemporary style

- Solid.
- Resistant to thermal variations.
- Anti-corrosion.
- Low maintenance (Sadev cleaning kit).

STAINLESS STEEL 316 - OUTDOOR: effective in aggressive environments
STAINLESS STEEL 304 - INDOOR

THE FINISH:

Finish / Finish:

00 Aluminium brut sans scotch adhésif
/Raw aluminium without adhesive tape

01 Anodized aluminum/Anodised aluminium
02 Aluminium Brushed stainless steel effect
/Brushed stainless steel effect aluminium

03 RAL

N Noir/Black

31 Inox satiné/Satin Stainless Steel

32 Inox brillant/Polished Stainless Steel



ANODIZED ALUMINUM



BRUSHED STAINLESS STEEL
EFFECT ALUMINIUM



BRUSHED STAINLESS STEEL



RAL



BEECH



OAK

SUMMARY OF HANDRAILS & ACCESSORIES



P07

HANDRAILS
**GLASS EDGE
PROTECTION**





P 11 HANDRAILS
GROOVE



HANDRAILS & ASSOCIATED ACCESSORIES

TO BE FOUND FOR EACH MODEL

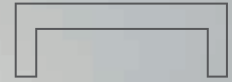
For each handrail,
find its list of adapted accessories.



P 19 HANDRAILS
TUBULAR



HANDRAILS GLASS EDGE PROTECTION

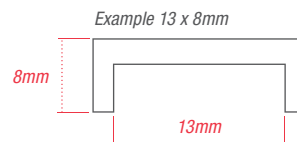


PROFILE ALUMINIUM

Dimensions: 13x8 (0.51 x 0.3)
Glass thickness: 13.5



PROFILE ALUMINIUM



Finish:  ANODIZED ALUMINIUM

Ref. 0010201308250-01	Dim. 13 x 8 mm	Glass th. 12.7	L. 2 500 mm	0010201308500-01	Dim. 13 x 8 mm	Glass th. 12.7	L. 5 000 mm
0010201408250-01	Dim. 14 x 8 mm	Glass th. 13.5	L. 2 500 mm	0010201408500-01	Dim. 14 x 8 mm	Glass th. 13.5	L. 5 000 mm
0010201708250-01	Dim. 17 x 8 mm	Glass th. 16.7	L. 2 500 mm	0010201708500-01	Dim. 17 x 8 mm	Glass th. 16.7	L. 5 000 mm
0010201908250-01	Dim. 19 x 8 mm	Glass th. 17.5	L. 2 500 mm	0010201908500-01	Dim. 19 x 8 mm	Glass th. 17.5	L. 5 000 mm
0010202308250-01	Dim. 23 x 8 mm	Glass th. 21.5	L. 2 500 mm	0010202308500-01	Dim. 23 x 8 mm	Glass th. 21.5	L. 5 000 mm
0010202708250-01	Dim. 27 x 8 mm	Glass th. 25.5	L. 2 500 mm	0010202708500-01	Dim. 27 x 8 mm	Glass th. 25.5	L. 5 000 mm

Finish:  BRUSHED STAINLESS STEEL EFFECT

Ref. 0010201308250-02	Dim. 13 x 8 mm	Glass th. 12.7	L. 2 500 mm	0010201308500-02	Dim. 13 x 8 mm	Glass th. 12.7	L. 5 000 mm
0010201408250-02	Dim. 14 x 8 mm	Glass th. 13.5	L. 2 500 mm	0010201408500-02	Dim. 14 x 8 mm	Glass th. 13.5	L. 5 000 mm
0010201708250-02	Dim. 17 x 8 mm	Glass th. 16.7	L. 2 500 mm	0010201708500-02	Dim. 17 x 8 mm	Glass th. 16.7	L. 5 000 mm
0010201908250-02	Dim. 19 x 8 mm	Glass th. 17.5	L. 2 500 mm	0010201908500-02	Dim. 19 x 8 mm	Glass th. 17.5	L. 5 000 mm
0010202308250-02	Dim. 23 x 8 mm	Glass th. 21.5	L. 2 500 mm	0010202308500-02	Dim. 23 x 8 mm	Glass th. 21.5	L. 5 000 mm
0010202708250-02	Dim. 27 x 8 mm	Glass th. 25.5	L. 2 500 mm	0010202708500-02	Dim. 27 x 8 mm	Glass th. 25.5	L. 5 000 mm

Finish:  RAL COLORS

Ref. 0010201308250-03	Dim. 13 x 8 mm	Glass th. 12.7	L. 2 500 mm	0010201308500-03	Dim. 13 x 8 mm	Glass th. 12.7	L. 5 000 mm
0010201408250-03	Dim. 14 x 8 mm	Glass th. 13.5	L. 2 500 mm	0010201408500-03	Dim. 14 x 8 mm	Glass th. 13.5	L. 5 000 mm
0010201708250-03	Dim. 17 x 8 mm	Glass th. 16.7	L. 2 500 mm	0010201708500-03	Dim. 17 x 8 mm	Glass th. 16.7	L. 5 000 mm
0010201908250-03	Dim. 19 x 8 mm	Glass th. 17.5	L. 2 500 mm	0010201908500-03	Dim. 19 x 8 mm	Glass th. 17.5	L. 5 000 mm
0010202308250-03	Dim. 23 x 8 mm	Glass th. 21.5	L. 2 500 mm	0010202308500-03	Dim. 23 x 8 mm	Glass th. 21.5	L. 5 000 mm
0010202708250-03	Dim. 27 x 8 mm	Glass th. 25.5	L. 2 500 mm	0010202708500-03	Dim. 27 x 8 mm	Glass th. 25.5	L. 5 000 mm

Dimensions in millimeters

13 x 8mm	14 x 8mm	17 x 8mm	19 x 8mm	23 x 8mm	27 x 8mm	5 000mm	2 500mm
0.51 x 0.3 in	0.55 x 0.3 in	0.66 x 0.3 in	0.74 x 0.3 in	0.90 x 0.3 in	1.06 x 0.3 in	196.85 in	98.42 in

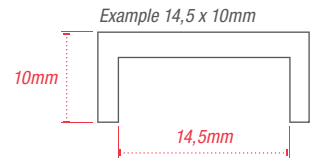
Dimensions in inches



PROFILE WOOD

Material: ● OAK

Ref. 0010202410240W10	Dim. 14.5 x 10mm	Glass th. 6.6	L. 2 400mm
0010202810240W10	Dim. 18.5 x 10mm	Glass th. 8.8	L. 2 400mm
0010203210240W10	Dim. 22.5 x 10mm	Glass th. 10.10	L. 2 400mm



Material: ● BEECH

Ref. 0010202410240W20	Dim. 14.5 x 10mm	Glass th. 6.6	L. 2 400mm
0010202810240W20	Dim. 18.5 x 10mm	Glass th. 8.8	L. 2 400mm
0010203210240W20	Dim. 22.5 x 10mm	Glass th. 10.10	L. 2 400mm

Dimensions in millimeters

14.5 x 10mm	18.5 x 10mm	22.5 x 10mm	2 400mm
0.57 x 0.39 in	0.72 x 0.39 in	0.89 x 0.39 in	94.48 in

Dimensions in inches

ACCESSORIES



ANGLE WOOD

Material: ● OAK

Dimensions: **100 x 100mm (3.93x3.93 in)**

Ref. 001020231029W10	Glass th. 6.6
001020281029W10	Glass th. 8.8
001020321029W10	Glass th. 10.10

Material: ● BEECH

Dimensions: **100 x 100mm (3.93x3.93 in)**

Ref. 001020231029W20	Glass th. 6.6
001020281029W20	Glass th. 8.8
001020321029W20	Glass th. 10.10

FASTENING MATERIAL

DOUBLE SIDED
ADHESIVE TAPE
12mm x 18m

Ref. 0010ADDF-B01-12-18

HANDRAIL GROOVE



TUBE **WOOD**

Diameter: 42 (1,65)
Glass thickness: 8.8



TUBE **ALUMINUM**

Diameter: **50mm (1.96 in)**

Ref. 00102050500AL01 L. 5 000mm (196.85 in)



ANODIZED ALUMINUM

00102050500AL02 L. 5 000mm (196.85 in)



BRUSHED STAINLESS STEEL EFFECT

ACCESSORIES



GASKET

Glass thickness: **8.8/4**


Ref. 001024AL175 L. 1 000mm (196.85 in)

Glass thickness: **10.10/4**

Ref. 001024AL215 L. 1 000mm (196.85 in)

CAP **ALUMINUM**

Diameter: **50mm (1.96)**

Ref. 00102050B0AL01  ANODIZED ALUMINUM

Ref. 00102050B0AL02  BRUSHED STAINLESS STEEL EFFECT

90° CONNECTOR

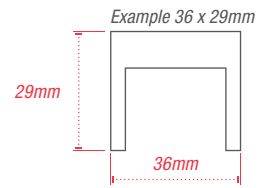
Dimensions: **100 x 100mm (3.93x3.93 in)**

Ref. 00102029

HANDRAIL GROOVE



TUBE ALUMINUM



Dimensions: **48 x 37mm (1.88x1.45 in)**

Ref. 0010204837500AL01  ANODIZED ALUMINUM L. 5 000mm (196.85 in)

0010204837500AL02  BRUSHED STAINLESS STEEL EFFECT L. 5 000mm (196.85 in)

Dimensions: **36 x 29mm (1.41x1.14 in)**

Ref. 0010203629500AL01  ANODIZED ALUMINUM L. 5 000mm (196.85 in)

0010203629500AL02  BRUSHED STAINLESS STEEL EFFECT L. 5 000mm (196.85 in)

ACCESSORIES



GASKET

Glass thickness: **8.8/4**


Glass thickness: **10.10/4**

Ref. 001024AL175 L. 1 000mm (196.85 in)

Ref. 001024AL215 L. 1 000mm (196.85 in)



CAP ALUMINUM

Finish:  ANODIZED ALUMINUM

Ref. 0010203629B0AL01 Dim. **36 x 29mm (1.41 x 1.14 in)**

0010204837B0AL01 Dim. **48 x 37mm (1.88 x 1.45 in)**

Finish:  BRUSHED STAINLESS STEEL EFFECT

Ref. 0010203629B0AL02 Dim. **36 x 29mm (1.41 x 1.14 in)**

0010204837B0AL02 Dim. **48 x 37mm (1.88 x 1.45 in)**



90° CONNECTOR

Dimensions: **100 x 100mm (3.93x3.93 in)**

Ref. 00102029



TUBE

STAINLESS STEEL 304

Ref. 00102042500	∅ 42mm (1.65 in)	L. 5 000mm (196.85 in)
00102048500	∅ 48mm (1.88 in)	L. 5 000mm (196.85 in)
00102060500	∅ 60mm (2.36 in)	L. 5 000mm (196.85 in)

STAINLESS STEEL 316

Ref. 00102042500A4	∅ 42mm (1.65 in)	L. 5 000mm (196.85 in)
00102048500A4	∅ 48mm (1.88 in)	L. 5 000mm (196.85 in)
00102060500A4	∅ 60mm (2.36 in)	L. 5 000mm (196.85 in)

ACCESSORIES



GASKET

Glass thickness: 10 > 13.5

Ref. 00102410135	∅ 42.4mm (1.66 in)
00102910135	∅ 48.3mm (1.90 in)

Glass thickness: 21 > 25.5

Ref. 00102921255	∅ 48.3mm (1.90 in)
00103421255	∅ 60.3mm (2.37 in)

Glass thickness: 15 > 17.5

Ref. 001024175	∅ 42.4mm (1.66 in)
00102915175	∅ 48.3mm (1.90 in)
00103415175	∅ 60.3mm (2.37 in)

Glass thickness: 19 > 21.5

Ref. 00102419215	∅ 42.4mm (1.66 in)
00102919215	∅ 48.3mm (1.90 in)
00103419215	∅ 60.3mm (2.37 in)



CAP

STAINLESS STEEL 304

Ref. 0010204210	∅ 42mm (1.65 in)
0010204810	∅ 48mm (1.88 in)
0010206010	∅ 60mm (2.36 in)

STAINLESS STEEL 316

Ref. 0010204210A4	∅ 42mm (1.65 in)
0010204810A4	∅ 48mm (1.88 in)
0010206010A4	∅ 60mm (2.36 in)

ACCESSORIES



90° CONNECTOR

STAINLESS STEEL 304

Ref. 0010204229	∅ 42mm (1.65 in)
0010204829	∅ 48mm (1.88 in)
0010206029	∅ 60mm (1.88 in)

STAINLESS STEEL 316

Ref. 0010204229A4	∅ 42mm (1.65 in)
0010204829A4	∅ 48mm (1.88 in)
0010206029A4	∅ 60mm (1.88 in)



180° CONNECTOR

STAINLESS STEEL 304

Ref. 0010204220	∅ 42mm (1.65 in)
0010204820	∅ 48mm (1.88 in)
0010206020	∅ 60mm (1.88 in)

STAINLESS STEEL 316

Ref. 0010204220A4	∅ 42mm (1.65 in)
0010204820A4	∅ 48mm (1.88 in)
0010206020A4	∅ 60mm (1.88 in)



WALL CONNECTOR **STAINLESS STEEL 304**

Ref. 0010204211	∅ 42mm (1.65 in)
0010204811	∅ 48mm (1.88 in)

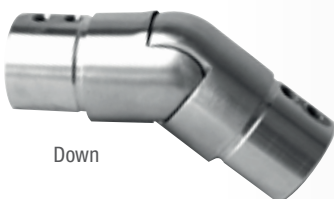
Up



ARTICULATED JOINT **STAINLESS STEEL 304**

Ref. 00102042291 (Up)	∅ 42mm (1.65 in)	Angle 25 - 55°
00102042292 (Down)		

Down

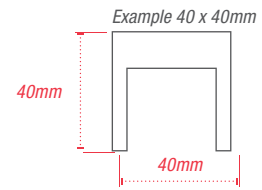




TUBE **STAINLESS STEEL 316**

Dimensions: **40 x 40mm (1.57x1.57 in)**

Ref. 0010204040600A4 L. 6 000mm (236.22 in)



ACCESSORIES



GASKET

Glass thickness: **6.6**

Ref. 001024135 L. 5 000mm (196.85 in)

Glass thickness: **8.8**

Ref. 001024175 L. 5 000mm (196.85 in)

Glass thickness: **10.10**

Ref. 001024215 L. 5 000mm (196.85 in)



90° CONNECTOR **STAINLESS STEEL 316**

Dimensions: **40 x 40mm (1.57x1.57 in)**

Ref. 001020404029A4



180° CONNECTOR **STAINLESS STEEL 316**

Dimensions: **40 x 40mm (1.57x1.57 in)**

Ref. 001020404020A4

ACCESSORIES



CAP **STAINLESS STEEL 316**

Dimensions: 40 x 40mm (1.57x1.57 in)

Ref. 001020404010A4



ARTICULATED JOINT **STAINLESS STEEL 316**

Dimensions: 40 x 40mm (1.57x1.57 in)

Ref. 0010304040291A4	Descente
0010304040292A4	Monté



WALL CONNECTOR **STAINLESS STEEL 316**



Dimensions: 40 x 40mm (1.57x1.57 in)

Ref. 001030404011A4



TUBE **WOOD**



Diameter: **42mm (1.65 in)** | Glass thickness: **8.8**

Ref. 00102042180W10B	L. 1 800mm	 OAK
00102042180W20B	70.86 in	 BEECH



TUBE **WOOD**

Dimensions: **40 x 40mm (1.57x1.57 in)** | Glass thickness: **8.8**

Ref. 0010204040180W10B	L. 1 800mm	 OAK
0010204040180W20B	70.86 in	 BEECH

Wooden handrails of 60 mm x 40 mm are available on request.

FIXING MATERIAL

DOUBLE SIDED
ADHESIVE TAPE
12 mm x 18 m

Ref. 0010ADDF-B0I-12-18



DIRECT LIGHTING TO INCREASE SAFETY

By choosing our **LED products and accessories**, you can opt for a lighted handrail in a staircase or corridor for optimal safety or to create a more decorative effect.



HANDRAIL GROOVE - LED OPTION



TUBE

STAINLESS STEEL 304

Ref. 00102042500 \varnothing 42mm (1.65 in) L. 5 000mm (196.85 in)

STAINLESS STEEL 316

Ref. 00102042500A4 \varnothing 42mm (1.65 in) L. 5 000mm (196.85 in)



WALL BRACKET - FIXED - LED **STAINLESS STEEL 304**

Ref. 00106000

ACCESSORIES



LED PROFILE - PVC

Ref. 0010LED1-PROFSUP L. 2 000mm (78.74 in)



CLIP CONNECTOR

Ref. 0010LED1-CON1CLIP

These 2 elements can be connected by welding.



LED DIFFUSER COVER - PVC

Ref. 0010LED1-CAPODIFF



CLIP CONNECTOR

Ref. 0010LED1-CON2

To linearly join two LED strips.



LED STRIP

Ref. 0010LED1-BLCNTR5M L. 5 000mm (196.85 in)



CONNECTOR TO BE WELDED

Ref. 0010LED1-CONSOUD



CAP

Ref. 0010LED1-BO

FASTENING MATERIAL

DOUBLE SIDED ADHESIVE TAPE - 15mm x 1.5m
Ref. 0010ADDF-VER-12-25

HANDRAIL TUBULAR



TUBE

STAINLESS STEEL 304

Diameter: 48.3 (1,90 in)



TUBE



STAINLESS STEEL 304

Ref. 00103033200	∅ 33.7mm	L. 2 000mm
00103033400	∅ 33.7mm	L. 4 000mm
00103033600	∅ 33.7mm	L. 6 000mm
Ref. 00103042200	∅ 42.4mm	L. 2 000mm
00103042400	∅ 42.4mm	L. 4 000mm
00103042600	∅ 42.4mm	L. 6 000mm
Ref. 00103048200	∅ 48.3mm	L. 2 000mm
00103048400	∅ 48.3mm	L. 4 000mm
00103048600	∅ 48.3mm	L. 6 000mm

STAINLESS STEEL 316

Ref. 00103033200A4	∅ 33.7mm	L. 2 000mm
00103033400A4	∅ 33.7mm	L. 4 000mm
00103033600A4	∅ 33.7mm	L. 6 000mm
Ref. 00103042200A4	∅ 42.4mm	L. 2 000mm
00103042400A4	∅ 42.4mm	L. 4 000mm
00103042600A4	∅ 42.4mm	L. 6 000mm
Ref. 00103048200A4	∅ 48.3mm	L. 2 000mm
00103048400A4	∅ 48.3mm	L. 4 000mm
00103048600A4	∅ 48.3mm	L. 6 000mm

Dimensions in millimeters

33,7mm **42,4mm** **48,3mm** **2 000mm** **4 000mm** **6 000mm**

Dimensions in inches

1.32 in **1.66 in** **1.90 in** **78.74 in** **157.48 in** **236.22 in**

ACCESSORIES



CAP

STAINLESS STEEL 304

Ref. 0010303310	∅ 33.7mm
0010304210	∅ 42.4mm
0010304810	∅ 48.3mm

STAINLESS STEEL 316

Ref. 0010303310A4	∅ 33.7mm
0010304210A4	∅ 42.4mm
0010304810A4	∅ 48.3mm



90° CONNECTOR

STAINLESS STEEL 304

Ref. 0010303329	∅ 33.7mm
0010304229	∅ 42.4mm
0010304829	∅ 48.3mm

STAINLESS STEEL 316

Ref. 0010303329A4	∅ 33.7mm
0010304229A4	∅ 42.4mm
0010304829A4	∅ 48.3mm



180° CONNECTOR

STAINLESS STEEL 304

Ref. 0010303320	∅ 33.7mm
0010304220	∅ 42.4mm
0010304820	∅ 48.3mm

STAINLESS STEEL 316

Ref. 0010303320A4	∅ 33.7mm
0010304220A4	∅ 42.4mm
0010304820A4	∅ 48.3mm



WALL CONNECTOR **STAINLESS STEEL 304**

Ref. 0010304211	∅ 42mm (1.65 in)
-----------------	------------------

HANDRAIL TUBULAR



TUBE **STAINLESS STEEL 304**

Dimensions: **40 x 40mm (1.57x1.57 in)**

Ref. 0010304040300 L. 3 000mm (118.11 in)

ACCESSORIES



CAP **STAINLESS STEEL 304**

Dimensions: **40 x 40mm (1.57x1.57 in)**

Ref. 001030404010



WALL CONNECTOR **STAINLESS STEEL 304**

Dimensions: **40 x 40mm (1.57x1.57 in)**

Ref. 001030404011A4



90° CONNECTOR **STAINLESS STEEL 304**

Dimensions: **40 x 40mm (1.57x1.57 in)**

Ref. 001030404029



180° CONNECTOR **STAINLESS STEEL 304**

Dimensions: **40 x 40mm (1.57x1.57 in)**

Ref. 001030404020



TUBE **WOOD**

Diameter: **42mm (1.65 in)**

Ref. 00103042180W10

L. 1 800mm

 OAK

00103042180W20

(70.86 in)

 BEECH

ACCESSORIES



END CAP **STAINLESS STEEL 304**

Diameter: **42mm (1.65 in)**

Ref. 0010304210W



CONNECTOR **STAINLESS STEEL 304**

Diameter: **42mm (1.65 in)**

Ref. 00100304220W



90° FEMALE CONNECTOR **STAINLESS STEEL 304**

Diameter: **42mm (1.65 in)**

Ref. 0010304229W



PLASTIC SUPPORT

Diameter: **42mm (1.65 in)**

Ref. 0010304200W



BRACKET
HANDRAIL/GLASS

STAINLESS STEEL 304

Glass thickness: 12 > 17.5



HANDRAIL BRACKET ON GLASS **STAINLESS STEEL 304**

Drilling: **Countersunk**

Glass thickness: **11.5 > 13.5**

Ref. 00101006111004

Glass thickness: **14 > 15.5**

Ref. 00101006111006

Glass thickness: **16 > 17.5**

Ref. 0010100611110

Drilling: **Cylindrical**

Glass thickness: **10 > 12**

Ref. 001010062412

Glass thickness: **13 > 15.5**

Ref. 001010062414

Glass thickness: **16 > 17.5**

Ref. 001010062420

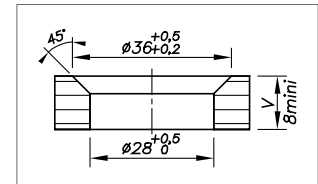
Glass thickness: **18 > 19.5**

Ref. 0010100611112

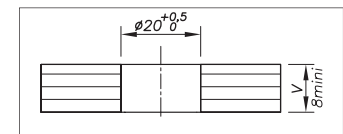
Glass thickness: **20**

Ref. 0010100611114

Drilling Plan Countersunk



Drilling Plan Cylindrical



HANDRAIL BRACKET ON GLASS **STAINLESS STEEL 304**

Drilling: **Countersunk**

Glass thickness: **10 > 10.5**

Ref. 0010200611116

Glass thickness: **16 > 19.5**

Ref. 0010200611120

Glass thickness: **20 > 21.5**

Ref. 0010200611124

Drilling: **Cylindrical**

Glass thickness: **10 > 10.5**

Ref. 001020062424

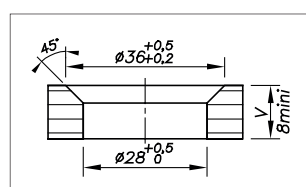
Glass thickness: **16 > 19.5**

Ref. 001020062432

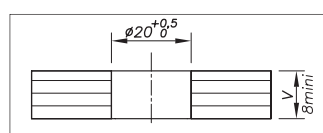
Glass thickness: **20 > 21.5**

Ref. 001020062436

Drilling Plan Countersunk



Drilling Plan Cylindrical





ADJUSTABLE HANDRAIL BRACKET

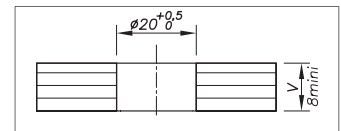
STAINLESS STEEL 304

For cylindrical handrail

Glass thickness: 8 > 18

Ref. 00104000-0818

Drilling Plan Cylindrical



ADJUSTABLE HANDRAIL BRACKET

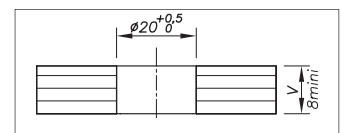
STAINLESS STEEL 304

For flat handrail

Glass thickness: 8 > 18

Ref. 00104500-0818

Drilling Plan Cylindrical



CLAMPED HANDRAIL SUPPORT

STAINLESS STEEL 304

For cylindrical handrail

Glass thickness: 12 > 17.5

Ref. 00101030-1218

Glass thickness: 18 > 25.5

Ref. 00101030-1926



FIXED HANDRAIL BRACKET

WALL **STAINLESS STEEL 304**

For flat handrail

Ref. 00105000



FIXED HANDRAIL BRACKET

For cylindrical handrail

STAINLESS STEEL 304 **STAINLESS STEEL 316**

Ref. 00101000

Ref. 00101000A4



ADJUSTABLE HANDRAIL BRACKET

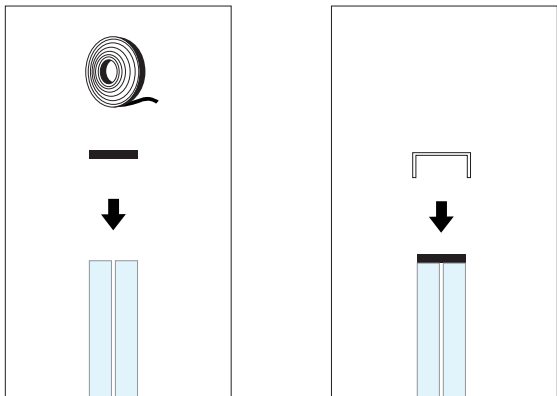
WALL **STAINLESS STEEL 304**

For cylindrical handrail

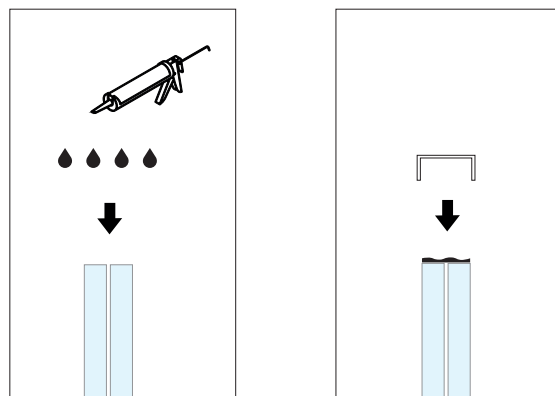
Ref. 00101500

GLASS EDGE PROTECTION

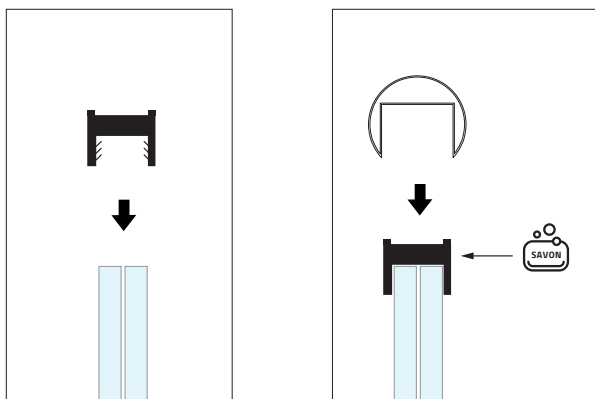
Installation with adhesive



Installation with silicone

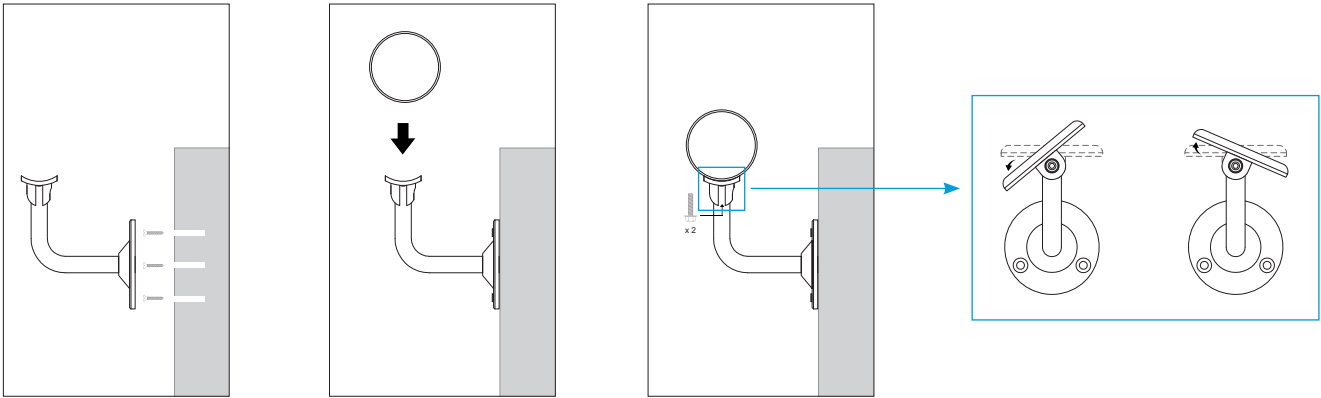


GROOVE



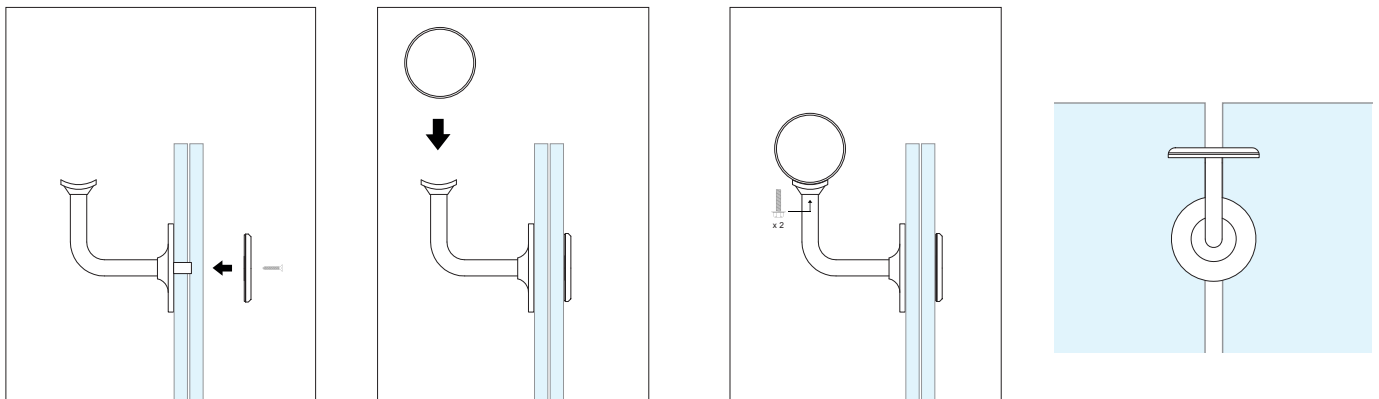
TUBULAR

Fixed handrail bracket - wall

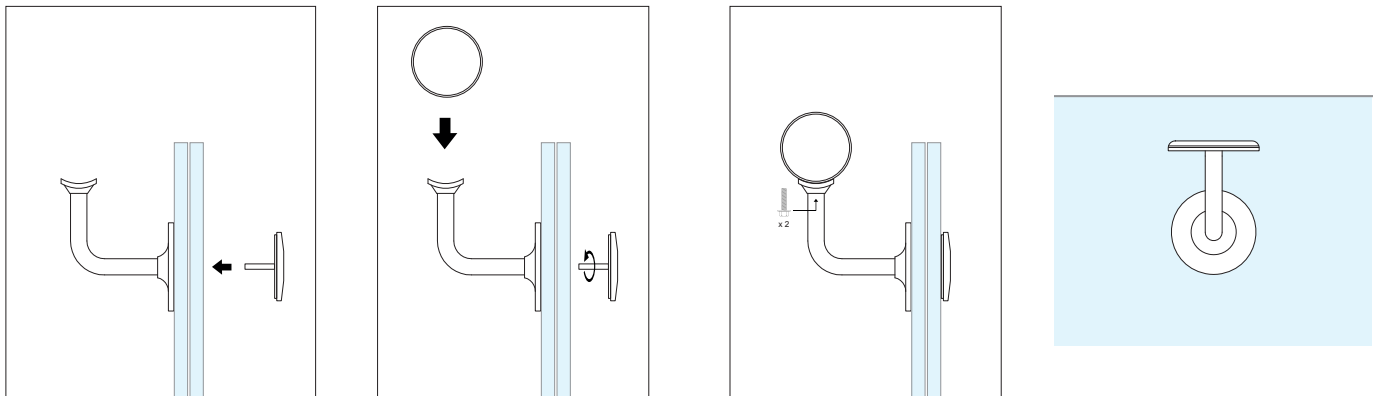


Clamped handrail support

**Tightening torque:
10N.m**



Handrail bracket on drilled glass





CLASSIC[®]

DECOR[®]

CONSTRUCT[®]

SABCO[®]

SWIMSIDE[®]

COLCOM

Membre du

**GROUPE
SIMONSWERK**

Tel. +33(0) 4 50 08 39 00 | Fax. +33(0) 4 50 08 39 49
76, chemin des poses - 74330 Poisy (France)

sadev.com

suivez-nous sur

