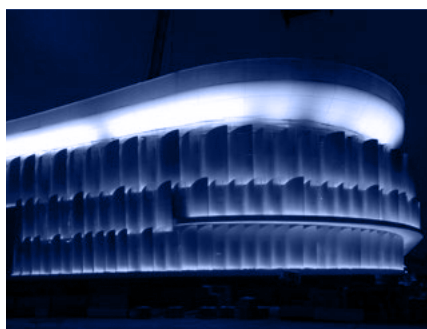


STADE U ARENA NANTERRE

FRANCE



THE PROJECT AND SADEV® CONTRIBUTION

A CROWN OF CONCRETE SCALES

The **U Arena** project can be considered as an **unconventional project**, as the stadium will “indoor” host the rugby team “Racing-Metro 92” and become the **European largest concert hall**, thanks to a flexible capacity from 10 000 to 40 000 seats.

Closed to the hall will be located a 30 000 sqm. building, hosting the General Council Headquarter.

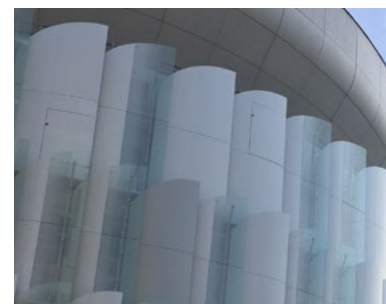
AN ARCHITECTURAL WORK

This 117 000 sqm. urban area has been conceived and designed by the French famous architect Christian de Portzamparc.

The project takes part of the “Seine-Arche” operation, as the Arena is located at the foot of Grande Arche la Defense.

SADEV CONTRIBUTION

The Arena stands are covered by a crown of wavy concrete, under which



© Sadev

stands the facade, composed of glass and aluminum scales.

The 3 levels' facade have been equipped with high-size scales that are transparent, mixt or opaque.

Sadev supplied to Sipral (the subcontractor of Vinci Construction France) :

- 2 500 rotules from type R1001
- 1 200 rotules from type R1006

That maintain the glass scales in 12 points.

Technical datas

GENERAL
 CONTRACTOR

Racing Arena

ARCHITECT

Atelier de
 Portzamparc

SADEV®
 CUSTOMER

Sipral,
 subcontractor of
 Vinci Construction

YEAR OF
 REALISATION

2016

SURFACE

117 000 m²